

WHY CONSIDER SCREENING?

Why Consider Screening your pet with Digital Thermal Imaging?

- Our pets can't tell us where it hurts
- Affordable quick wellness screen
- Discover secondary areas not seen by the naked eye
- Locate pain and inflammation
- See a before, during and after treatment results
- Completely safe with nothing being emitted
- Improve outcomes with more precise targeted treatment of areas

HISTORY OF THERMAL IMAGING

"In whatever part of the body where an excess of heat or cold is felt, disease is there to be discovered".

- Hippocrates 400 BC

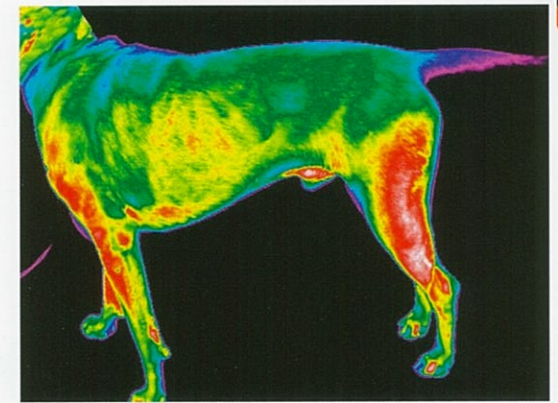
1945: Early version of thermal imaging

1979: Dr. Jo Ann Haberman at University of Oklahoma demonstrate early detection of breast cancer with success rate of 97% using thermal imaging

1990's: First fully PC compatible digital systems with color jet printers available

2001: Intro to an uncooled microbolometer cameras exist

2010: Development of fixed focus, high resolution to see clearer



HOW IT WORKS

Digital Thermal Imaging do not depict temperature but measure radiated energy from the targeted tissue.

The difference in radiated energy can be measured by temperature and color associated with change.

Hotter areas depict inflammation and cooler areas lack of circulation.

See inside the body by evaluating the hot and cold conducted to the surface of the body.